



KONICA MINOLTA

MINIMISE ALL. MAXIMISE ALL.

# **bizhub**

## **C3850FS / C3850 / C3350**



Giving Shape to Ideas

## Diverse Functions Match Evolving Workstyles

The advanced design of A3 MFP, now distilled into an A4 MFP

# bizhub

## C3850FS

### C3850 / C3350

The lineup features three models: the C3850FS with a built-in finisher, the C3850 high-speed colour MFP which prints 38 ppm, and the C3350 which prints 33 ppm.

Providing the single optimal machine to cover varied workflows.



bizhub C3850

bizhub C3850FS

## Stronger Service for Mobile and Cloud Environments

### Also compatible with office wireless LAN environments

Use the NC-P03 wireless LAN option to connect to office wireless environments. This allows unrestricted installation in areas that do not have LAN wiring, and where it is difficult to install LAN cables. This product can also be used as an access point to create a wireless LAN environment.

\* The optional Mount Kit MK-06 is required. If it is used as an access point, it cannot be used as a client.

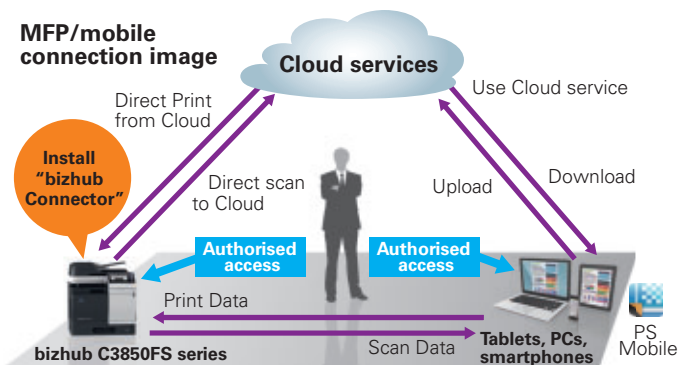
### Compatible with bizhub Connector to use Cloud environments

These models are compatible with the bizhub Connector (option) application, for linkage with Cloud services. Use the control panel to directly access Cloud services. Upload scanned data with one operation, without ever using a PC, and print data from the Cloud, for better working efficiency.

- bizhub Connector G-1 for Google Apps
- bizhub Connector S-1 for Microsoft SharePoint
- bizhub Connector E-1 Works with Evernote

\* The optional memory expansion and i-Option LK-101 v3 are required.

### MFP/mobile connection image



### Smart linkage with mobile devices

#### AirPrint

Mac OS and iOS devices can perform wireless printing without install printer driver.



#### Mopria Print Service

Devices running Android 4.4 or later OS versions can output printing without going through a printer driver.



#### Google Cloud Print

iOS and Android devices and PCs can print via the Internet without going through a printer driver.



\* Setup using Google Cloud Print Setup is required.  
\* The optional memory expansion and i-Option LK-101 v3 are required.

#### Konica Minolta Print Service

Standard Android print functions can print directly to bizhub.



#### PageScope Mobile

Compatible with print and scan apps on iOS and Android devices. Use the Android version to scan and print just by touching the NFC tag\*1.



\*1 The Android device must equip an NFC antenna. First, the NFC Tag Writer must be used to write device information to the NFC tag. The NFC tag is sold separately. Consult your distributor for details.

## Ideal Usability for Business Situations

### Equipped with an internal finisher in the same compact size

bizhub C3850FS is equipped as standard with an internal finisher that has a stapling function. It delivers higher productivity from the same compact size.



### Pursuing the next level of productivity in a compact body

The bizhub C3850FS, C3850, and C3350 have compact bodies, 555mm wide x 584mm tall. Their double-sided print function can handle thick paper of up to 210g/m<sup>2</sup>, they have duplex ADF, and they can be set with high-capacity paper cassettes for 550 sheets as standard. Two optional 500-sheet paper feeder units can be added for a huge maximum paper capacity of 1,650 sheets. These models are compatible with PCL and PostScript3, and support page description languages such as XPS, and file formats like JPEG, PDF, and OOXML, to cover wide-ranging applications.



Multiple bypass tray, 100 sheets

Standard paper cassette, 550 sheets

Optional Paper Feeder Unit PF-P13, 500 sheets

bizhub C3850FS  
+ PF-P13x2 + DK-P03

Up to  
**1,650**  
sheets  
(80g/m<sup>2</sup>)

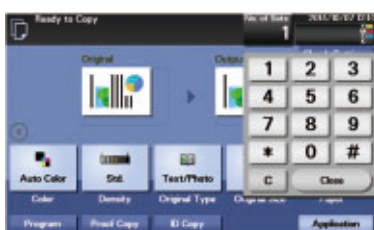
### New Multitouch UI is easy for anyone to use

The control panel, is a large 7-inch screen, provides the same Multitouch UI as bizhub A3 MFP, so it can be operated in the same intuitive way as like a smart phone. For example, it's convenient to zoom the screen display in and out with pinch-in and pinch-out operations.



### The on-screen numerical keypad is convenient for numerical input

The numerical keypad for entering numbers is only called up on the screen when it is needed. It enables input by smooth touch-screen operation.



### Browse on the control panel

The large 7-inch screen of the control panel can be used for Internet browsing.

\* The optional memory expansion and i-Option LK-101 v3 are required.



### Adjustable control panel angle

The control panel is simple to adjust to the right position for easy visibility and operation, making touch operations more comfortable.



### Build an authentication system adapted to the office environment

In addition to user authentication in a server-less system, authentication can be linked to an authentication server that is already in operation, it can use staff IC cards, or some other configuration to build the right authentication system for the user environment. PageScope Authentication Manager can be used to build an even more efficient management system. In combination with PageScope Enterprise Suite, this system can also provide Pull Print, which allows output to be picked up from the MFP where authentication is performed, after output is specified.



### High-resolution Output Presents Fine Text and Thin Lines Clearly

Print output is available at up to 1,200dpi, to reproduce intricate details beautifully in photos and diagrams.

### Diverse transmission methods when scanning enhance office working efficiency

Scanned data can be transmitted and stored by various methods, promoting information sharing and paper saving within the office. Choose the storage format from six types, including compact PDF, to suit the application. Stored data can be viewed and deleted from a PC.

### PageScope Enterprise Suite allows convenient linked management with A3 MFPs

Introducing PageScope Enterprise Suite integrates the management of MFPs over a network. This reduces the workload on the IT administrator and makes office management work more efficient. The system can be set up with batch operation, and linked management together with A3 MFPs is smooth, to increase the efficiency of office management as well.

### Other functions

- Scheduled for compliance with the ISO15408 international security standard (from December 2014)
- PC-less direct printing of the data stored in USB memory
- Compatible with ThinPrint, which quickly processes huge volumes of print data\*1
- \*1 The optional i-Option LK-111 is required.
- Usable with external applications via OpenAPI



# Outstanding environmental performance

## ■ Use the power key to switch easily into Eco mode

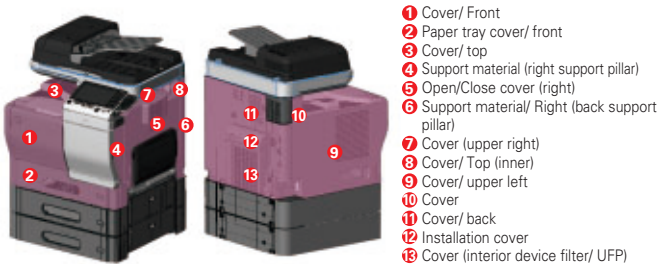
A simple operation, with a long or short press on the power key of the control panel, switches the unit into Eco mode, promoting energy-saving in the office.



## ■ Reducing environmental impact by using recycled materials

Recycled materials, such as recycled PC/PET developed by Konica Minolta using advanced chemical processing technology, are effectively employed for the outer surfaces to reduce environmental impact. The bizhub C3850 and C3350 use recycled PC/PET for 47.7% of their surface areas. The registration keys in control panel use bioplastic, making effective use of recycled materials.

\* Recycled PC is produced by collecting and recycling the gallon bottles used with water servers, while PET is collected and recycled from PET bottles.

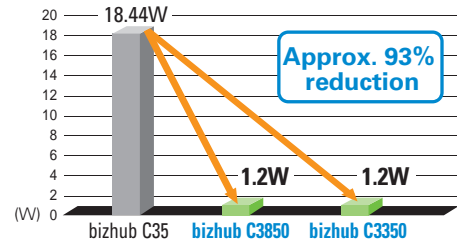


## ■ Toner saving and Brank Page Removal function save resources

These models are equipped with a toner-saving function to output printing with less toner than usual, and the blank page removal function that automatically deletes blank pages from output. These functions reduce costs and environmental impact by suppressing the usage of toner and paper.

## ■ Power consumption during sleep is cut to a class-leading 1.2W

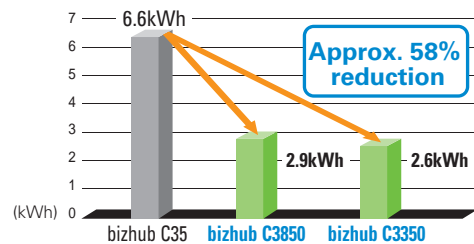
At 1.2W, power consumption during sleep reaches the best level in this product class. It is approximately 93% lower than the previous model (bizhub C35). This helps to cut the TCO of the office, and reduces environmental impact.



## ■ TEC values pass the standard value for the Energy Star Program

The TEC value of the bizhub C3850 is 2.9kWh, and that of the bizhub C3350 is 2.6kWh. Both machines clear the standard value for the International Energy Start Program Ver2.0. They also achieve at least 58% of the reduction compare with the previous model (bizhub C35). Reducing the TEC value also helps to cut TCO.

\* Typical Electricity Consumption: This is a guideline, stipulated by the International Energy Star Program, for the energy consumed in one week.



C3850FS model shown.

## bizhub C3850FS/C3850/C3350

<b>C3850FS</b> Colour B&W 38/38 ppm	<b>C3850</b> Colour B&W 38/38 ppm	<b>C3350</b> Colour B&W 33/33 ppm	Resolution 1,200 dpi	IC-Card Authentication	Emperon Drive!	USB Print	Fax	Mobile Support
Bioplastic	Recycled PC/PET	Simitri with Biomass	*1 Optional					

For more information please visit the bizhub Web site at

[http://www.biz.konicaminolta.com/colour/c3850\\_c3350/index.html](http://www.biz.konicaminolta.com/colour/c3850_c3350/index.html)



Product appearance, configuration and/or specifications are subject to change without notice. This product is not available for some countries or regions.



The KONICA MINOLTA logo, symbol mark, "Giving Shape to Ideas", bizhub, PageScope, Simitri, i-Option, Emperon logo, Konica Minolta Optimised Print Services logo and their respective logos are registered trademarks or trademarks of KONICA MINOLTA, INC. Evernote is a registered trademark or trademark of Evernote Corporation. Mac OS and AirPrint logo are trademarks or registered trademarks of Apple Inc. in the U.S. and other countries. Google, Google Apps, Google Cloud Print and Android are trademarks or registered trademarks of Google Inc. in the U.S. and other countries. Microsoft and SharePoint are registered trademarks or trademarks of Microsoft Corporation in the U.S. and other countries. Mopria is a registered trademark or trademark of Mopria Alliance Inc. All other brands and product names are registered trademarks or trademarks of their respective companies or organisations.

### Ecology & Environment

KONICA MINOLTA products are designed with the environment in mind.

- Energy Star
- Eco-friendly Toners
- RoHS Compliance
- Production at ISO Certified Factories
- WEEE Compliance



From consulting, system design, to operations, Konica Minolta offers total support to optimise your office output environment.

<http://www.biz.konicaminolta.com/services/ops>

### ⚠ Requirements for safe use

- Please read and follow the instruction manual to ensure safe operation.
- Only operate using appropriate power supply and voltage.
- Connecting the earth wire to an inappropriate place may cause explosion or electric shock. Please connect accordingly (Taiwan and the Philippines only).

**KONICA MINOLTA, INC.**

2-7-2 Marunouchi Chiyoda-ku, Tokyo, Japan  
<http://www.biz.konicaminolta.com>